



TEAMSTERS LOCAL UNION NO. 429

Affiliated with the International Brotherhood of Teamsters

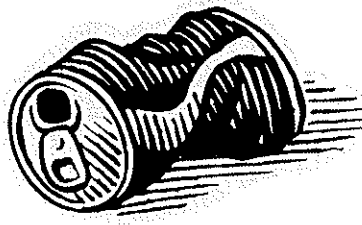
WILLIAM M. SHAPPELL
President

KEITH L. NOLL
Secretary-Treasurer



September, 2009

NOTICE



Thank you for your support of the Aluminum Can Drive. Up through April, 2007, any monies made on this Drive was put in the Scholarship Escrow Account to help fund the additional educational programs we have taken on for our children. Effective May, 2007, the distribution of any revenues was 1/3 to the Scholarship Escrow Account and 2/3's to the new Strike Fund Account.

The cans have been very slow coming in so now we would like to collect the aluminum cans and/or the tabs from the cans separately. Please remove the tabs from the cans and keep separate when delivering to the Union Hall or when giving them to your Steward or Business Agent.

We have a dumpster from Pollock – Reading behind the building to put the cans in until they are taken to be cashed in.

PLEASE SAVE AND DONATE YOUR ALUMINUM!